

STAGE IV 2000

Alternating
pressure

Low Air Loss

Mattress
replacement
system



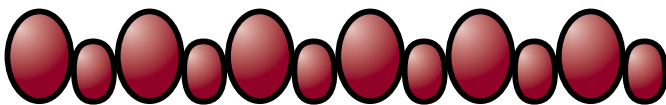
Optimal wound healing therapy tailored to individual patient needs. Take advantage of the latest in surfaces, pneumatics and microprocessor controls for a superior therapy difference.

Experience the Stage IV 2000 difference

The Stage IV 2000 is a microprocessor controlled Alternating Pressure and Low Air Loss therapeutic mattress system. Individual patients needs are optimised by independent or combined therapies.

The Alternating Pressure feature provides relief by deflating and inflating every other air cell on a timed interval. It is widely recognised that constant pressure to a boney prominence is a leading cause of skin breakdown. The Stage IV 2000 system provides continuous movement of air cells to alleviate constant pressure and enhance circulation. The deflated air cells provide pressure release, while the inflated air cells support the patient's weight.

Alternation



The Stage IV 2000 electronic controllers provide a real-time display of air pressure for both the inflated and deflated cells. The amount of pressure to support a patient can be set automatically based on patient height and weight or manually set for custom configurations. All settings are stored in non-volatile memory. If power is interrupted, the electronic controller automatically returns to the previous settings when the power returns.

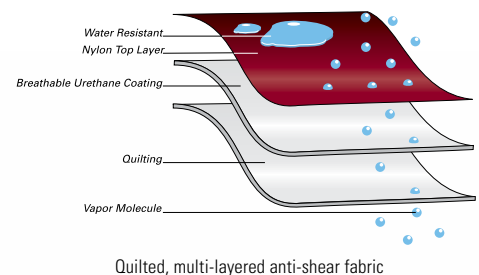


electronic controller



Low Air Loss

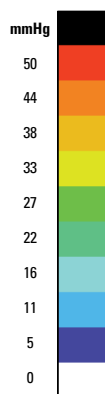
The controlled Low Air Loss (LAL) feature provides an optimum temperature environment to assist in patient healing and comfort. LAL therapy is delivered through a patented SenTech Coverlet that provides a flow of diffused air directly to the patient's skin through thousands of microscopic vents. In addition, the coverlet fabric has been manufactured to provide an anti-shear, anti-friction surface.



| Feature | Function | Benefit |
|--|---|---|
| Alternating Pressure | Maximum difference between inflated and deflated cycling air cells. Removes pressure from the skin at regular intervals, at the interface of the body and the mattress | Therapeutic results by drawing pressure away from patient's skin, creating reactive hyperemia |
| Low Air Loss (LAL) | Thousands of microscopic air-vents in the patented SenTech Coverlet provide diffused airflow directly to the patient's skin, suitable for flap, graft and burn patients | Improved wound care by addressing moisture and heat buildup, assists in patient healing and comfort |
| Flexible Air Flotation mode | Supplies an adjustable, constant cushion of air to disperse body weight without movement | Maximise patient comfort, customise patient preferred level of softness or firmness, and provides interface pressures far below that of a standard mattress |
| Patented fabric | Quilted, breathable, five-layer design impermeable to water, yet permeable to vapour molecules (perspiration). | Demonstrable reduction in friction and shear between patient's skin and mattress surface |
| Visual Monitoring and Sensor Technology | Sensitive to changes in patient positioning and movement, automatically adjusts airflow to compensate | Greater patient comfort, reduced risk of developing pressure wounds |
| Built-in Memory | Stores all customised settings | Automatically resumes with recalled settings even after power loss |
| Interactive SetUp | Enter patient height, weight and press Auto Set for air pressure (settings can be modified independently) | Time efficient, simple set-up and function management for carers |
| Max Inflate | Maximum static pressure setting to 40mmHg (no alternation in this mode) | Creates a firm surface for nursing protocols or patient transfer |
| Fowler Boost for inclined or seated patients | Mode automatically adjusts the pressure to compensate for greater surface pressure in the sacrum area, adding 20% more air with the touch of one button | Reduced risk of bottoming out, no need to manipulate each time bed is raised or lowered |

Pressure Mapping

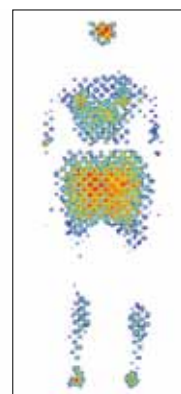
Compare the degrees of pressure on contact points of the same patient



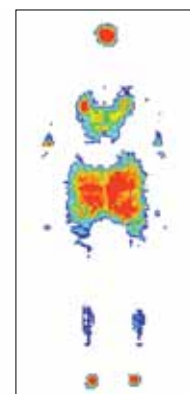
Test Subject:
77kg male



Alternating pressure relief on a SenTech Mattress



Pressure distribution on a Convuluted Foam Mattress



Pressure distribution on a standard static hospital mattress



Visual and audible alarm for pressure loss beyond 3 cycle periods

Compressor driven pumps for reduced noise

Lightweight and portable

Removable cover for washing

Flexible attachments secure to any bed frame

16.5cm air cells integrated with a 7.5cm foam mattress

Zipper sealed system

Emergency CPR pull, 8 second deflation starting at bed head

Easy to replace air cells

Air retained in case of power loss

Carry handles for easy transport

Dedicated LAL and Air Flotation hose

| | | | | |
|------------------------|---|---|---|------------------------------|
| Specifications | Electronic Controller | Dimensions | 31 h x 36.8 w x 15.25 d cm | |
| | | Weight | 7.7 kgs | |
| | | Electrical Parameters | Power requirements | 240V, 50Hz |
| | | | Maximum Current | <0.5 A |
| | | Operating Parameters | Weights range | 20-230 kgs |
| | | Height range | 117-198 cms | |
| | | Pressure range | 5-50 | |
| | | Limited Warranty | Compressor Pump | 3 years |
| | | | Electronic controller | 2 years |
| | | Mattress Replacement (fully inflated) | Dimensions | 21.6 h x 91.5 w x 203.2 d cm |
| | Weight | | 9.98 kgs | |
| | Cycle Time | | 5 minutes | |
| | Hose Connectors | | Press on | |
| | Approvals | | TGA and C-tick | |
| Optional Extras | Bolster Coverlet Bedside Air Chair | Limited Warranty | Soft Goods | 1 year |
| | | | For patient orientation if turning or rolling For patient care out of bed, the Bedside Air Chair provides therapy for both the back and the seat of the patient. | |
| Bariatric | | The SenTech 2000 is also available to meet the needs of bariatric patients, ask us about the SenTech 2000 custom widths, available on request | | |