

Control Unit										
Control Interface	Dimensions (WxHxDmm)	Unit Weight	Air Output (Litres per Minute)	Hose Connection Type	Static Transfer Function	Auto Disengage Static Function	Static Flotation Function	Low Pressure Alarm	Power Down Alarm	Mode of Operation
Digital	315x270x120mm	4.5kg	12 lpm	Rapid release handle with clip	✓	20 mins	21mmHg	Audible and visual	✓	Non-continuous

Support Surface											
Configuration	Dimensions (LxWxDmm)	Alternation Type	Alternation Time	Side Bolsters	Cell In Cell Technology	Treatment Zones	Number of Cells	Static Head Cells	CPR Function	Anti Kink Hosing	Positioning Handles
Mattress	2000x880x280mm	1 cell in 3	12 minutes	Integrated	✓	Heel zone	19	✓	Quick Release Tag	✓	✓

Top Cover			
Top Cover Material	Attachment Type	Infection Control Side Skirts	Seam Joining
PU coated polyester	360° quick release zip	✓	Heat welded seams

pressure mapping

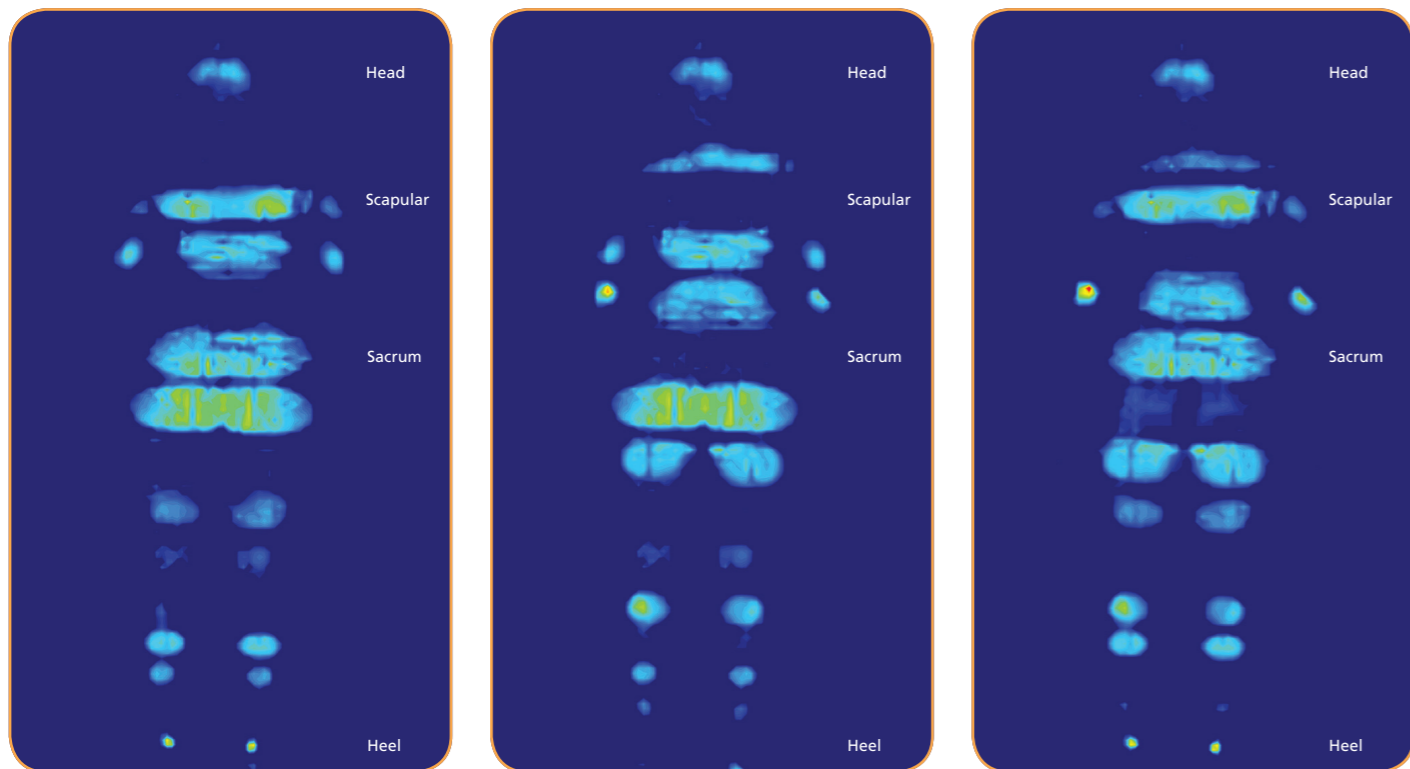


Figure 1 Figure 2 Figure 3

0 10.0 11.9 13.9 15.8 17.7 19.7 21.6 23.5 25.5 27.4 29.4 31.3 33.2 35.2 37.1 39.0 41.0 42.9 44.8 46.8 48.7 50.6 52.6 54.5 56.5 58.4 60.3 62.3 64.2 66.1 68.1 70.0

Pressure Scale in mmHg

Subject: Female, weight 86kg, BMI 31.2. **Figure 1.** Pressure mapping diagram of the 9 inch APM demonstrates A cells in the deflated position. **Figure 2.** demonstrate B cells in the deflated position. **Figure 3.** Demonstrates C cells in deflated position. Note that a complete change in contact area under pressure has occurred upon third cycle.

Waterlow 20+ Very High Risk to 15+ High Risk

premium10



bringing you the world in health
 Novis Healthcare Pty Ltd Unit 12/12 Mars Road
 Lane Cove NSW 2066 Australia ABN 45 102 735 491
 T 1300 738 885 F 1300 738 886 E sales@novis.com.au
 www.novis.com.au

Proudly distributed by:



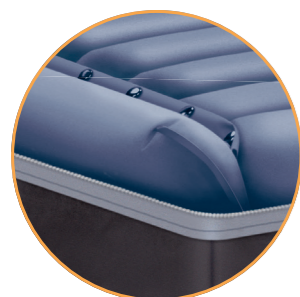
premium10

The premium10 is a cost effective, professional solution for high to very high risk patients. It facilitates greatly increased comfort while maximising therapeutic benefits.

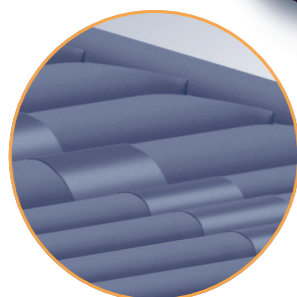
The unique heel zone ensures effective alternation of the high risk calcaneus and malleolus areas of the lower leg. Combined with lateral side bolsters for additional patient stability, it is ideal for patients at risk of developing pressure related ulceration.

The system also offers an excellent healing surface for patients receiving treatment for existing wounds.

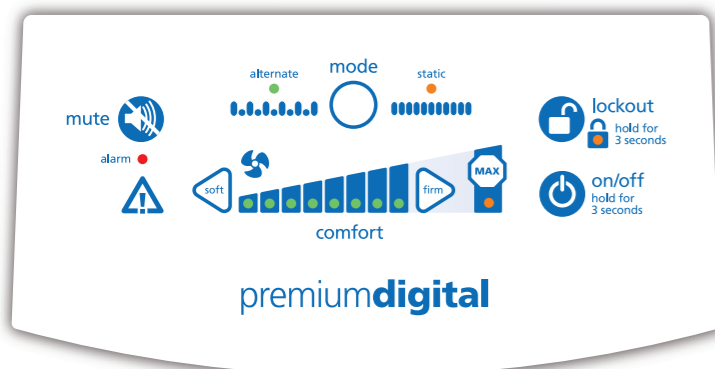
The premium10 has perfected the tried and true mechanisms of pressure redistribution through Cell-in-Cell technology for the ultimate in patient support, treatment and comfort.



Inflated side bolsters



Heel zone



Digital control unit
Dimensions: 315 x 270 x 120mm
Weight 4.5kg

Best suited for:

Home Care	✓
Nursing Home	✓
Hospital	✓
ICU/HCU	✓

key specifications

Code	PTAM0080
Length (mm)*	2000
Width (mm)*	880
Depth (mm)*	280
Max User Weight	250kg

* Mattress dimensions

premium10
alternating system



For technical specifications, please visit www.novis.com.au

premium10

Feature	Function	Benefit
1 in 3 cell alternation sequence	Cyclic alternation ratio of two cells fully inflated to one cell deflated	More patient comfort and stability as well as increased "zero pressure" times
Twin compressors in the control unit	Increases the volume of airflow, enabling a larger person to be supported	Enables use by patients up to 250kg
TPU cells included in the mid section	Eight cells in the mid-section are of pure TPU material providing increased comfort, warmth and support to users	Provides additional support and comfort to the larger user without compromising therapeutic effect
Sealed base	No parts are sewn directly onto the base. All required fixtures are secured by welding	Enhanced infection control
Cell in cell design	Internal static cell remains fully inflated at all times. Built in safety mattress	Reduces the risk of bottoming out in the event of a power interruption
Digital control unit	Non-continuous operation with digital touch panel and bright LED interface	Easy to operate, less moving parts reduce wear and tear on the control unit and a sealed system ensures easy cleaning and better infection control
16 individual alternating transverse cells	Air filled mattress replacement support surface	Gentle and dynamic support while maintaining and stimulating the flow of blood and lymphatic fluids
Eight digital pressure comfort settings	Calibrated pressure levels	Adjusts to better suit individual comfort needs
Welded seams and full length waterfall flap	Infection control mechanism	Helps prevent entry of pathogens and secretions/excretions into the mattress and provides for easy cleaning
Power Cord Retention System	Retains power cord from pump to electrical outlet	Reduces potential as a trip hazard and accidental disconnection from power
Quick release CPR tag on base	Rapid deflation capability in thoracic region	Highly visible and accessible tag on base for rapid deflation of mattress
Static and Max Inflate functions	All cells become rapidly and consistently inflated	Stabilises the patient for treatment, transport and hygiene purposes, amongst numerous others; automatically switches to alternating mode after 20 minutes
Five narrower cells at mattress foot end	Air filled mattress replacement support surface for lower anatomy (heel zone)	Optimum alternation and support of heels and lower legs, especially for patients at complete bed rest or nursed in upright position
Hinged profile base	Mattress inclination	Continuous alternation in an inclined position. For patients upright in bed for extended periods
Permanent side bolsters	Air filled supporting side structures	Increased lateral stability and reduced risk of falling/slipping out of bed. Quickly equalises mattress pressure, adapting to any changes in body movement